



SILVERSTONE[®]
Designing Inspiration

PRECISION SERIES

A versatile ATX tower case for performance or silence

Special Features

- Quick access filters for easy cleaning
- Motherboard back plate opening for quick CPU cooler assembly
- Mesh front panel intake maximizes airflow with side window for viewing system innards (PS11B-W)
- Front-side intake vents with foam padded side panels to minimize noise (PS11B-Q)
- All black painted interior for stylish look
- Support graphics cards up to 16.2 inches



PS11B-Q

PS11B-W

HEADQUARTERS

12F., NO.168, Jiankang Rd., Zhonghe Dist.,
New Taipei City 235, Taiwan R.O.C.
Tel: +886-2-8228-1238
Fax: +886-2-8228-7123

USA

13626 Monte Vista Ave. Unit A, Chino,
CA 91710, USA
Tel: +1-909-465-9596
Fax: +1-909-465-9596

EUROPE

Brandstücken 43, D-22549 Hamburg
Germany
Tel: +49-40-675931-0
Fax: +49-40-675931-66

Model No.: SST-PS11B-W

SST-PS11B-Q

www.silverstonetek.com

Introduction

To meet enthusiasts' expectations for a versatile entry-level case, SilverStone created the Precision PS11 ATX tower case with no compromise in style or in quality. By adopting the bottom-PSU-mount design, the PS11 has flexible storage options and a wide range of support for nearly all components. Despite affordable prices, it still retains outstanding and practical features such as Superspeed USB 3.0 ports, space for high performance graphics cards, and support for various cooling configurations. The PS11 comes in two versions, one with side window and a mesh front panel for high cooling performance, while the other one has sound absorbing foam and indirect front-side intake vents for quiet operation.

Feature Photos



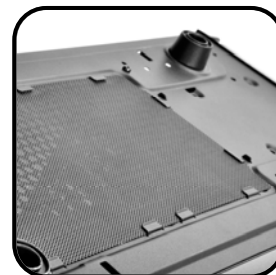
Two 5.25" drive bay space with tool-less locks



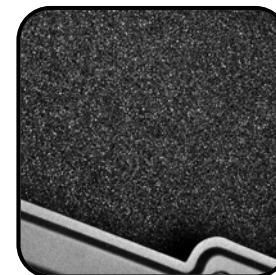
Three tool-less 3.5" drive bays



2 x 120mm/140mm fan slot (1 x 120mm intake fan included)



Quick access filters for easy cleaning



Front-side intake vents with foam padded side panels to minimize noise (PS11B-Q)



All black painted interior for stylish look

Specifications

Model	SST-PS11B-W, SST-PS11B-Q		Expansion Slot	7	
Material	Mesh front panel, steel body (SST-PS11B-W) Plastic front panel, steel body (SST-PS11B-Q)		Front I/O Port	USB 3.0 x 2, Audio x 1, MIC x 1	
Motherboard	ATX , Micro ATX		Power Supply	Optional Standard PS2 (ATX)	
Drive Bay	External	5.25" x 2	Expansion Card	Compatible with expansion cards up to 16.2" , width restriction - 6.1"	
	Internal	3.5" x 3 , 2.5" x 2	Limitation of CPU cooler	161mm	
Cooling System	Front	2 x 120mm/140mm fan slot, (1 x 120mm intake fan included)		Limitation of PSU	225mm
	Rear	1 x 120mm fan slot		Dimension	215.3mm (W) x 426.5mm (H) x 481.5mm (D), 44L
	Top	2 x 120mm fan slot (SST-PS11B-W)			
	Bottom	1 x 120mm fan slot			

Recommendations



ST40F-ESB & ST50F-ESB
Affordable quality 400W/500W PSU



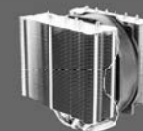
CP07 & CP08

CP07 & CP08 SATA II cables are perfect for any regular SATA devices



FQ141

140mm ultra-quiet PWM fan



HE01

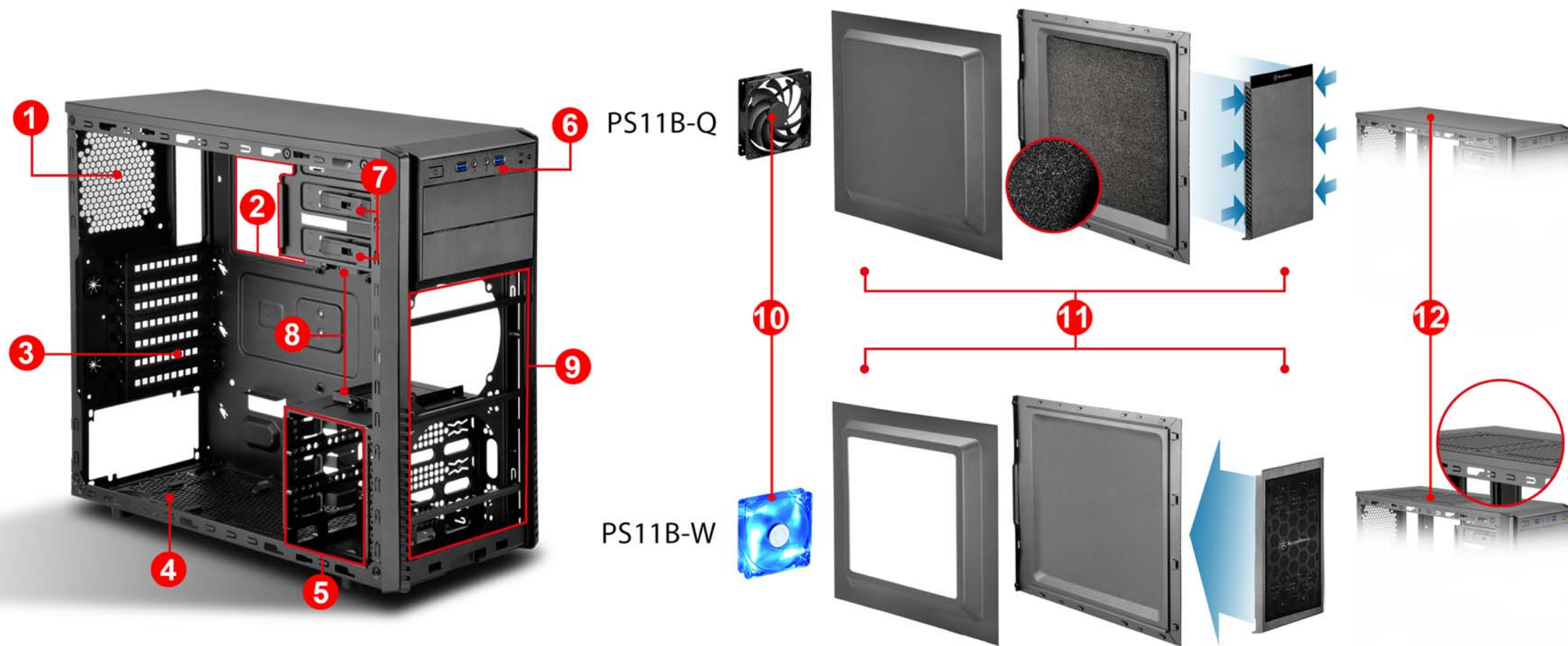
Six soldered heat-pipes, copper base and aluminum fins ensuring the best thermal conducting efficiency



FW122

Professional PWM 120mm fan with optimal performance and low noise

PRECISION SERIES



PS11B-Q

PS11B-W

- 1** 120mm fan slot
- 2** Motherboard tray cut-out for CPU cooler backplates
- 3** Seven expansion slots accommodates top-end graphics card up to 16.2" long
- 4** Fan filter for power supply intake area
- 5** Three tool-less 3.5" drive bays
- 6** I/O ports include microphone, audio, and two USB 3.0 ports
- 7** Two 5.25" drive bay space with tool-less locks
- 8** Two 2.5" drive bay
- 9** 2 x 120mm/140mm fan slot
- 10** 1 x 120mm intake front fan included (PS11B-W)
1 x 120mm intake LED front fan included (PS11B-Q)
- 11** Front-side intake vents with foam padded side panels to minimize noise (PS11B-Q)
Mesh front panel intake maximizes airflow with side window for viewing system innards (PS11B-W)
- 12** 2 x 120mm fan slot (PS11B-W)