

# AP120i-PRO

Enhanced 120mm PWM controlled air channeling fan

- Industry leading air channeling fan
- Dual ball bearing for longer lifetime use.
- Mixed fan blade design for noise reduction
- Integrated air channeling grille double as fan guard to reduce overall size
- Low power consumption
- Wide 0-2000 RPM speed range via PWM control allowing performance on demand



## Specifications

Model No.	SST-AP120i-PRO
Color	Black
Material	PBT
Bearing	Dual ball bearing
Connectors	4pin PWM
Rated Voltage	12V DC
Start Voltage	7V
Rate Current	0.21A
Rated Power	2.52W
Speed	0~2000rpm
Airflow	0~74 CFM
Static Pressure	0~2.52mm-H2O
Noise Level	0~38.9dBA
Dimension	120mm (L) x 120mm (W) x 25mm (H) 4.72" (L) x 4.72" (W) x 0.98" (H)
Weight	157g
MTBF	70,000Hr
Remark:0rpm@ PWM Duty cycle=0%,500rpm@PWM Duty cycle=20%	





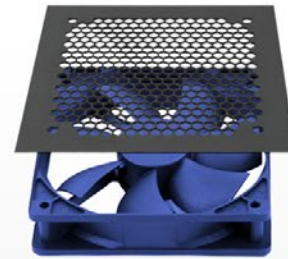
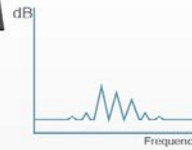
Mixed fan blade design

### High static pressure / Low noise operation

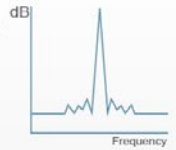
AP120i-PRO features 9 fan blades with mixed design to optimize for constant, high-pressure operation while keeping high-pitched noise low. It is perfect for intake ventilation holes as it greatly reduces noise level



AP120i-PRO

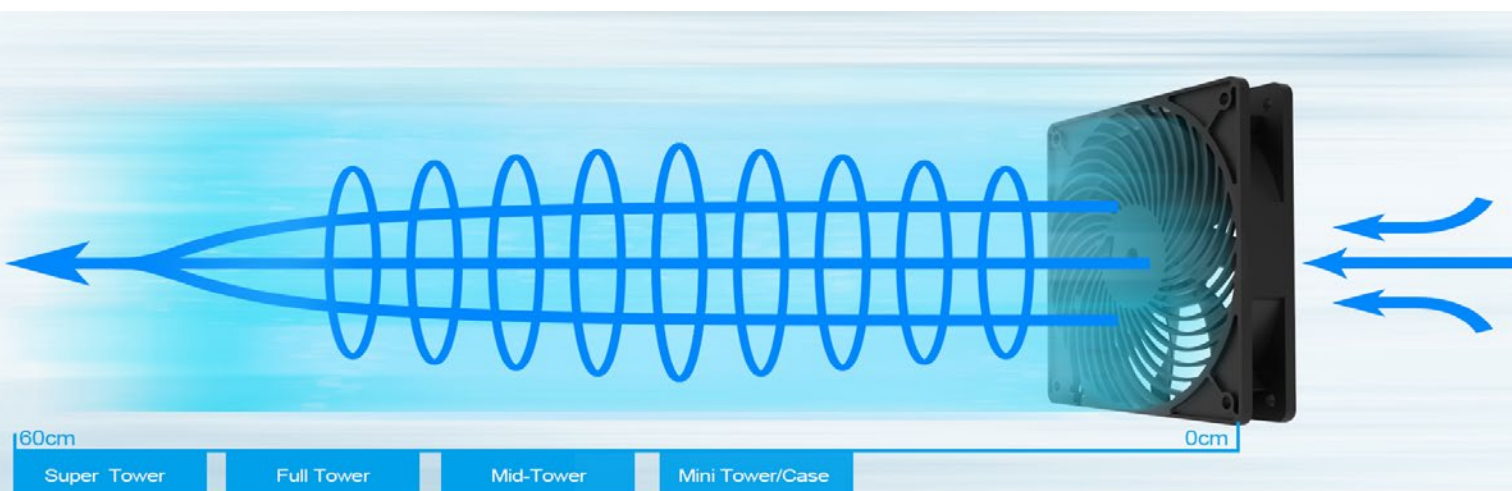


Normal fan



### Superior motor with dual ball bearings assembly

Equipped with superior actively cooled motor with dual ball bearings to provide lower noise, higher performance, and a long lifespan of 70,000hrs MTBF



### Unique grille design

AP120i-PRO's unique grille design can create enough focused pressure to push air as far as 60cm away with minimal fan speed and noise. This unmatched efficiency makes AP120i-PRO ideal as an intake case fan

