



SILVERSTONE[®]
Designing Inspiration

Screen Accessories **LT01**



Laptop tray for VESA monitor mounts and holders

Product Overview

• Introduction



SilverStone's LT01 is a metallic laptop tray with standard 100 x 100mm VESA mount for installation on monitor arms or mounts. This helps to create additional desktop space and unprecedented flexibility in laptop placement in a computing environment. The LT01 has adjustable brace to support laptops of various sizes and is a perfect match with SilverStone monitor arm products such as ARM22 or ARM31BS.

• Special Features

- Works with monitor arms or mounts for lifting laptop off desks
- Height adjustable design fits different size laptops
- Increases laptop breathing room for lower fan speed and noise reduction
- Easy assembly and compatible with standard 100 x 100mm VESA mount
- Anti-slip mat design keep laptop from sliding off

• Specification

Model	SST-LT01
Material	Steel / Plastic
Color	Silver
Net Weight	1.20Kg / (2.65lbs)
Support Max Weight	2Kg ~ 5.5Kg / (4.4 lbs ~ 12.1lbs)
Wall mount hole pitch	100 x 100 mm
Dimension	236mm (W) x 420mm (H) x 154mm (D)

Installation sketch map

ARM11SC/BC



ARM22SC/BC



ARM31BS



ENGLISH

Due to LT01's weight, sturdy monitor arms are recommended such as SilverStone's ARM series products.

DEUTSCH

Aufgrund des Gewichts des LT01 werden robuste Monitorarme empfohlen, wie bspw. Produkte der SilverStone-ARM-Serie.

FRANÇAIS

En raison du poids du LT01, un solide bras pour moniteurs sont requis, tels que les produits de la gamme ARM de Silverstone.

ESPAÑOL

Debido al peso de la LT01, se recomiendan brazos para monitor resistentes como la serie de productos SilverStone ARM.

ITALIANO

A causa del peso di LT01, si raccomanda l'utilizzo di supporti robusti, come i prodotti della serie ARM di Silverstone.

РУССКИЙ

Из-за массы устройства LT01 рекомендуется применять прочные кронштейны крепления монитора, например, изделия серии ARM компании SilverStone.

ไทย

เนื่องจากน้ำหนักของ LT01 แนะนำให้ใช้แขนจอภาพที่แข็งแรง เช่น ผลิตภัณฑ์ ARM ซีรีส์ ของ SilverStone

繁體中文

因LT01材質厚重，相當考驗臂架支撐受力，強烈建議安裝於銀欣ARM系列產品。

簡體中文

因LT01材質厚重，相當考驗臂架支撐受力，強烈建議安裝於銀欣ARM系列產品。

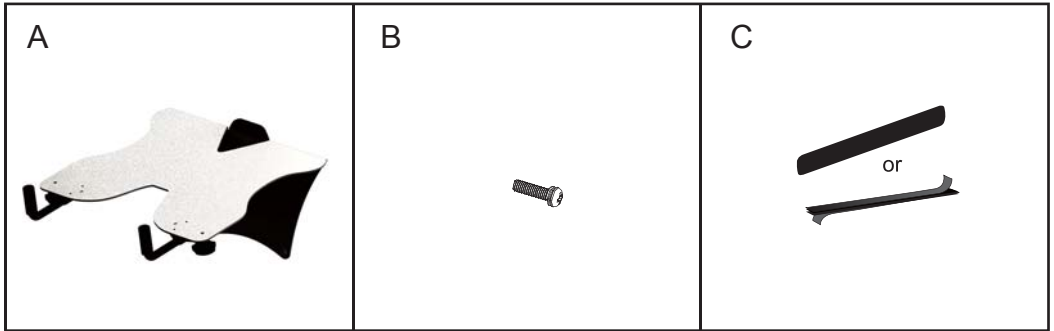
日本語

LT01の重量を考慮して、SilverStone製ARMシリーズ製品などの堅牢なモニターアームをお勧めいたします。

한국어

LT01의 무게 때문에 SilverStone의 ARM 시리즈 제품과 같이 견고한 모니터 암을 권장합니다.

Parts

**ENGLISH**

Both Velcro (x2 strips) and EPA (x2 pcs.) are provided in the default accessories kit. User shall use his or her discretion to attach laptops onto the designated plate using either parts.

DEUTSCH

Im Standardzubehörset ist sowohl Klettband (2 Streifen) als auch EPA (2 Stück) enthalten. Sie sollten Notebooks nach eigenem Ermessen mit einem der beiden Artikel an der zugewiesenen Platte befestigen.

FRANÇAIS

Des bandes Velcro (x 2) et EPA (x 2) sont fournies par défaut dans le kit d'accessoires. Il appartient à l'utilisatrice ou à l'utilisateur de fixer son ordinateur portable sur son support grâce à ces quatre pièces.

ESPAÑOL

Se proporciona Velcro (x2 tiras) y EPA (x2 paquetes) en el juego de accesorios por defecto. El usuario debería usarlos a discreción para unir el ordenador portátil a la placa designada usando estos elementos.

ITALIANO

Nel kit di accessori standard sono forniti sia velcro (2 strisce) che EPA (2 pezzi). L'utente deve utilizzarli a sua discrezione, per attaccare il computer portatile sulla piastra designata utilizzando uno dei due accessori.

РУССКИЙ

Застежки-липучки (2) и EPA (2 шт.) поставляются в комплекте с принадлежностями. Пользователь самостоятельно выбирает один из этих способов крепления ноутбука на нужной опоре.

ไทย

มีทั้งเวลโคร (x2 แถบ) และ EPA (x2 ชิ้น) ให้มาในชุดอุปกรณ์เสริมมาตรฐาน ผู้ใช้ต้องใช้ดุลพินิจของตัวเองในการติดโน้ตบุ้คลงบนแผ่นที่กำหนดโดยใช้ชิ้นส่วนที่เหมาะสม

繁體中文

零件包內提供兩個背膠貼與止滑墊，使用者可自行衡量決定貼於接觸面之指定區域

簡體中文

零件包內提供兩個背膠貼與止滑墊，使用者可自行衡量決定貼于接觸面之指定区域

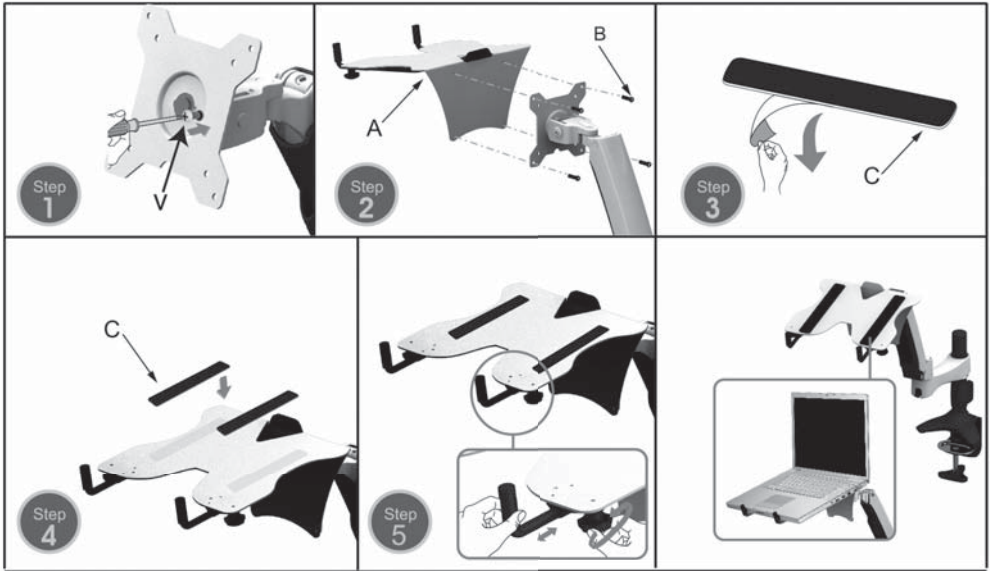
日本語

デフォルトのアクセサリキットには、マジックテープ (x2本) およびEPA (x2個)が含まれています。ノートブックを専用プレートに固定する方法するのいずれを採用するかは、ユーザーの賢明な判断にお任せいたします。

한국어

기본 액세서리 키트에 벨크로(x2 스트립)와 EPA(x2 개)가 둘 다 제공됩니다. 사용자가 둘 중 하나를 선택하여 노트북을 지정된 플레이트에 부착해야 합니다.

Installation Chart

**ENGLISH**

Please check the mount pattern of existing VESA plate to make sure it is compatible with laptop plates/adapters. We highly recommend to have pivot fixed before plates/adapters are to be installed.

DEUTSCH

Bitte prüfen Sie das Montagemuster der vorhandenen VESA-Platte und stellen Sie sicher, dass sie mit Notebook-Platten/Adaptern kompatibel ist. Wir empfehlen dringend, vor der Installation von Platten/Adaptern eine Drehachse zu befestigen.

FRANÇAIS

Vérifiez le schéma de montage du support VESA déjà présent afin de vous assurer qu'il soit compatible avec les adaptateurs/ supports pour ordinateurs portables. Nous vous recommandons très vivement de fixer le pivot avant l'installation de tout adaptateur ou de tout support.

ESPAÑOL

Por favor, compruebe el diseño de montaje de la placa VESA para asegurarse de que es compatible con los adaptadores/placas del portátil. Le recomendamos encarecidamente que lo fije antes de instalar placas/adaptadores.

ITALIANO

Controllare lo schema di montaggio della piastra VESA esistente per assicurarsi che sia compatibile con le piastre/adattatori per computer portatile. Si raccomanda vivamente di fissare il perno prima di installare le piastre/adattatori.

РУССКИЙ

Проверить схему крепления используемой платы VESA, чтобы убедиться в ее совместимости с опорными платами/переходниками ноутбука. Настоятельно рекомендуется перед установкой платы/переходника закрепить шарнир.

ไทย

โปรดตรวจสอบรูปแบบการยึดของแผ่น VESA ที่มีอยู่เดิม เพื่อให้มั่นใจว่าใช้งานได้กับแผ่นรอง/อะแดปเตอร์โน้ตบุ๊ก
แนะนำให้ยึดเดือยก่อนที่จะติดตั้งแผ่นรอง/อะแดปเตอร์

繁體中文

請先檢查現有欲安裝的VESA背板，以確保相容於本產品
強烈建議先將懸臂固定於支撐點再進行安裝

簡體中文

请先检查现有欲安装的VESA背板，以确保兼容于本产品
强烈建议先将悬臂固定于支撑点再进行安装

日本語

ノートブックプレート/アダプタとの互換性があるかどうか、既存のVESAプレートのマウント方式をご確認ください。
プレート/アダプタを設置する際は、ピボットを固定するよう強くお勧めいたします。

한국어

노트북 플레이트/어댑터와 호환될 수 있도록 기존 VESA 플레이트의 장착 패턴을 확인하십시오.
플레이트/어댑터가 설치되기 전에 피벗을 고정시키는 것이 좋습니다.

Installation Chart

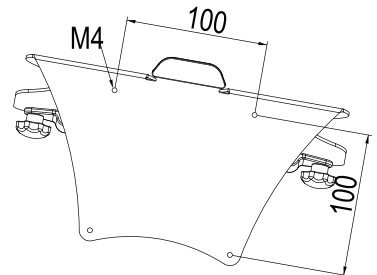
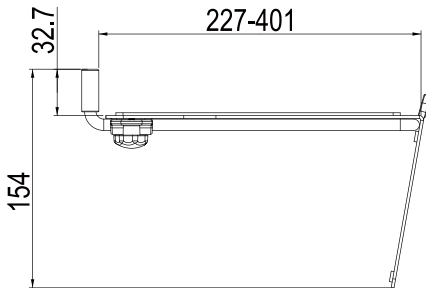
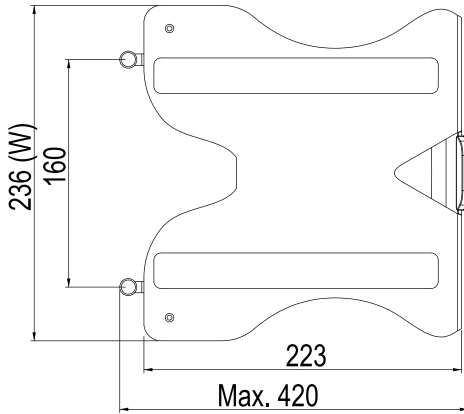
Height Adjust



Tilt



Dimension



Warranty Information

This product has a limited 3 year warranty in North America, Europe, and Australia.

For information on warranty periods in other regions, please contact your reseller or SilverStone authorized distributor.

Warranty terms & conditions

1. Product component defects or damages resulted from defective production is covered under warranty.
Defects or damages with the following conditions will be fixed or replaced under SilverStone Technology's jurisdiction.
 - a) Usage in accordance with instructions provided in this manual, with no misuse, overuse, or other inappropriate actions.
 - b) Damage not caused by natural disaster (thunder, fire, earthquake, flood, salt, wind, insect, animals, etc...)
 - c) Product is not disassembled, modified, or fixed. Components not disassembled or replaced.
 - d) Warranty mark/stickers are not removed or broken.
 Loss or damages resulted from conditions other than ones listed above are not covered under warranty.

2. Under warranty, SilverStone Technology's maximum liability is limited to the current market value for the product (depreciated value, excluding shipping, handling, and other fees). SilverStone Technology is not responsible for other damages or loss associated with the use of product.

3. Under warranty, SilverStone Technology is obligated to repair or replace its defective products. Under no circumstances will SilverStone Technology be liable for damages in connection with the sale, purchase, or use including but not limited to loss of data, loss of business, loss of profits, loss of use of the product or incidental or consequential damage whether or not foreseeable and whether or not based on breach of warranty, contract or negligence, even if SilverStone Technology has been advised of the possibility of such damages.

4. Warranty covers only the original purchaser through authorized SilverStone distributors and resellers and is not transferable to a second hand purchaser.

5. You must provide sales receipt or invoice with clear indication of purchase date to determine warranty eligibility.

6. If a problem develops during the warranty period, please contact your retailer/reseller/SilverStone authorized distributors or SilverStone <http://www.silverstonetek.com>.
Please note that: (i) You must provide proof of original purchase of the product by a dated itemized receipt; (ii) You shall bear the cost of shipping (or otherwise transporting) the product to SilverStone authorized distributors. SilverStone authorized distributors will bear the cost of shipping (or otherwise transporting) the product back to you after completing the warranty service; (iii) Before you send the product, you must be issued a Return Merchandise Authorization ("RMA") number from SilverStone. Updated warranty information will be posted on SilverStone's official website. Please visit <http://www.silverstonetek.com> for the latest updates.

Additional info & contacts

For North America (usasupport@silverstonetek.com)

SilverStone Technology in North America may repair or replace defective product with refurbished product that is not new but has been functionally tested. Replacement product will be warranted for remainder of the warranty period or thirty days, whichever is longer. All products should be sent back to the place of purchase if it is within 30 days of purchase, after 30 days, customers need to initiate RMA procedure with SilverStone Technology in USA by first downloading the "USA RMA form for end-users" form from the below link and follow its instructions.

<http://silverstonetek.com/contactus.php>

For Australia only (support@silverstonetek.com)

Our goods come with guarantees that cannot be excluded under the Australian Consumer Law.

You are entitled to a replacement or refund for a major failure and for compensation for any other reasonably foreseeable loss or damage.

You are also entitled to have the goods repaired or replaced if the goods fail to be of acceptable quality and the failure does not amount to a major failure.

Please refer to above "Warranty terms & conditions" for further warranty details.

SilverStone Technology Co., Ltd. 12F No. 168 Jiankang Rd., Zhonghe Dist., New Taipei City 235 Taiwan R.O.C. + 886-2-8228-1238 (standard international call charges apply)

For Europe (support.eu@silverstonetek.com)

For all other regions (support@silverstonetek.com)

SilverStone Technology Co., Ltd.

www.silverstonetek.com

support@silverstonetek.com

NO: G11224440