



**SILVERSTONE**<sup>®</sup>  
Designing Inspiration

*SilverStone Technology Co., Ltd.*

12F No. 168 Jiankang Rd., Zhonghe Dist., New Taipei City 235 Taiwan R.O.C.

Tel: +886-2-8228-1238 Fax: +886-2-8228-7123

**The recommended parts for building custom loop water cooling Milo ML07/RAVEN Z RVZ01**



**Reservoir:** Bitspower 3.5" Bay Reservoir (*the most crucial item*)





**CPU Water Block:** Bitspower AIZ77ITXD Water block series

Supports ASUS P8Z77-I DELUXE

*Option model for: Maximus VI Impact , MSI Z77IA-E53*



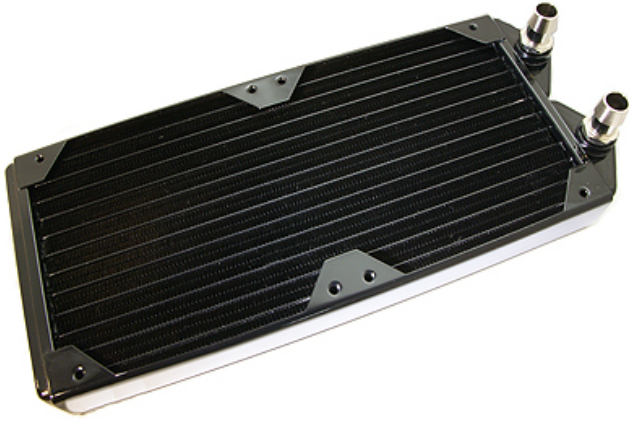
**GPU Water Block:** Watercool HEATKILLER<sup>®</sup> GPU-X<sup>3</sup> 6990 LT

Its slim design takes only one PCI-E slot.

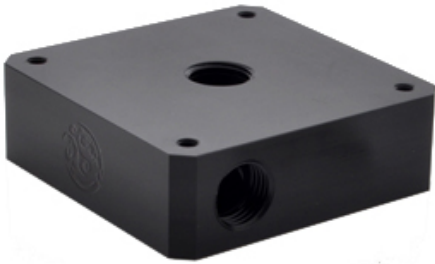




**Radiator:** Black ICE GT Stealth Lite 120 and 240  
The radiators for CPU and GPU cooling.



**Pump:** Bitspower BP-DDCTP-BK DDC TOP + Liang DDC pump



**Fitting and Tubing:**



Bitspower Premium G1/4"  
"Stubby" High Flow 3/8" Fitting  
x 6PCS



Bitspower G 1/4" Matte Black Rotary  
Angled Stubby Fitting - 3/8" x 8PCS



Bitspower Matte Black 60-Degree with  
Dual Inner G1/4" Extender x 1PCS



Bitspower G1/4" Black Sparkle  
Low-Profile Stop Fitting x 3PCS



Tube - 3/8" ID (5/8" OD) x several feet



Cable tie - 3.6X150mm x 1 pack



Coolant x 1BTL (1,000ml should be more  
than enough)